



THE ARTS THEATRE CAMBRIDGE

Visual Story

This document is a visual guide to help prepare you for your visit to The Arts Theatre Cambridge. This will help you to get to know the theatre before you come to a show.

If you would like to know anything else after reading this Visual Story, you can talk to our friendly Box Office team. You can contact them by phone or by email. You can find the contact details for the Box Office on the last page of the Visual Story.

HOW TO GET HERE



This is The Arts Theatre Cambridge. This is what the front of the theatre looks like from Peas Hill.



The nearest Car Park is the Grand Arcade.

The Grand Arcade has 950 spaces and is on Corn Exchange Street. It is a two-minute walk to the theatre.



There are four Blue Badge parking spaces outside the theatre on Peas Hill, and two around the corner on Wheeler Street.

There are also 34 Blue Badge spaces in the Grand Arcade Car Park.

HOW TO GET HERE



The Cambridge Bus Station is on Drummer Street, which is a 7-minute walk to the theatre.

[You can plan your journey and search bus timetables online here.](#)



The Arts Theatre Cambridge is a twenty-five minute walk from Cambridge Station.

[Find out more information about access at the station here.](#)



There is a bicycle rack alongside the St Edward's Passage entrance to the theatre, or on Peas Hill.

The Grand Arcade bike park is a 5-minute walk away, and closes at 11.30pm at night.

WHEN YOU ARRIVE

There are two entrances to the theatre.



The main entrance is on Peas Hill. It looks like this.

The theatre is open from 45 minutes before the start of the show, and you are welcome to come in any time from then.



When you walk inside, you will be in the foyer. This can get busy before shows.



On the left is the Box Office. You can collect your tickets here.

If you already have your ticket, you do not need to visit the Box Office, but the staff are always able to help if you need.

WHEN YOU ARRIVE



The other entrance is on St. Edward's Passage. It looks like this.



When you walk inside, you will see the Cloakroom.

If your bag is larger than an A4 piece of paper, you will need to leave it here during the show.



You can take anything you will need during the performance out of your bag and take it into the auditorium with you. If you have medical equipment stored in your bag, you can take everything with you.

To the left of the cloakroom, there is another foyer space. It looks like this.

TOILETS

There are several toilets in the building, across all floors.



There are women's toilets on the ground floor and Floor 5.

The Floor 5 toilets can be accessed via the lift or the stairs next to the cloakroom.



There are men's toilets on the ground floor and Floor 3.

The Floor 3 toilets can be accessed via the lift or the stairs next to the cloakroom.



There are three accessible toilets in the building. They are on the Ground Floor, Level 3 and Level 5.

The toilets on the ground floor and Floor 5 also have baby-changing facilities.

FOOD AND DRINKS

There are 3 bars in the building. You can buy drinks and snacks to eat before and during the show. Before the show, you can also pre-order drinks for the interval.



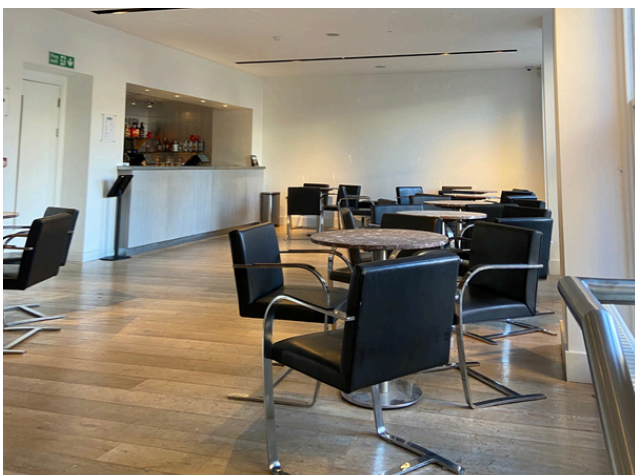
This is the Stalls Bar.

The Stalls Bar is on the ground floor. You can get there through the Peas Hill entrance.



This is the Circle Bar.

The Circle Bar is on Level 1. You can get there by the stairs near the St Edward's Passage entrance, or the lift.



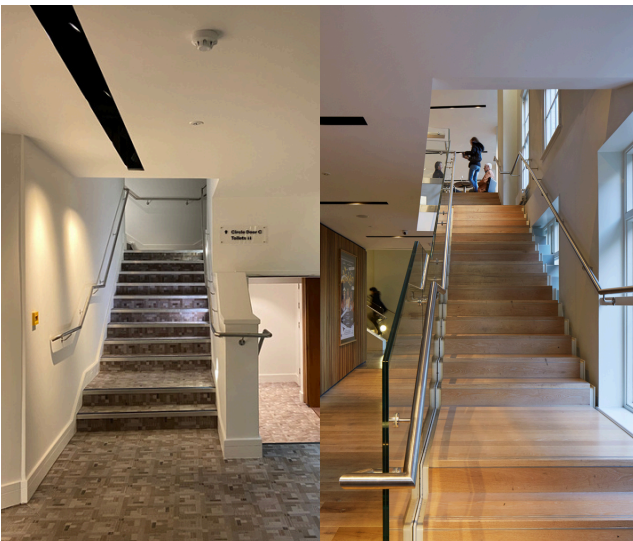
This is the Maynard Bar

The Maynard Bar is on Level 2. You can get there by the stairs near the St Edward's Passage entrance, or the lift.

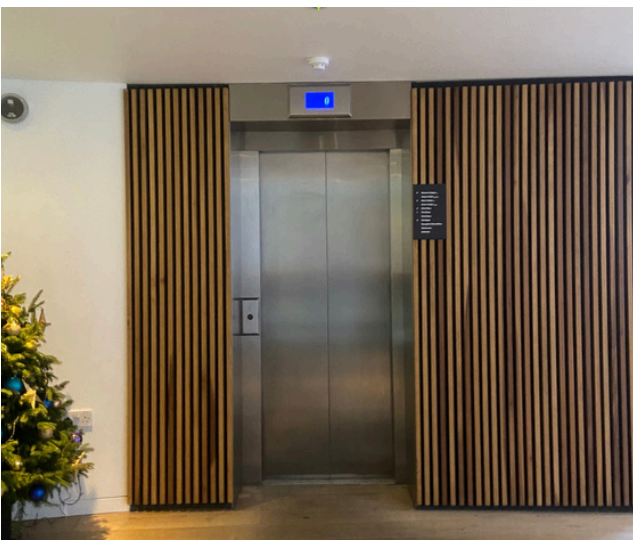
GETTING AROUND



There are signs everywhere which will show you where to go. They look like this.



There are stairs on both sides of the building.



There is a lift.

The lift is closest to the St. Edward's Passage entrance.

GETTING AROUND



If you need help, you can ask an **usher**. They are there to help you.

The ushers will wear a uniform which looks like this.

FINDING YOUR SEAT



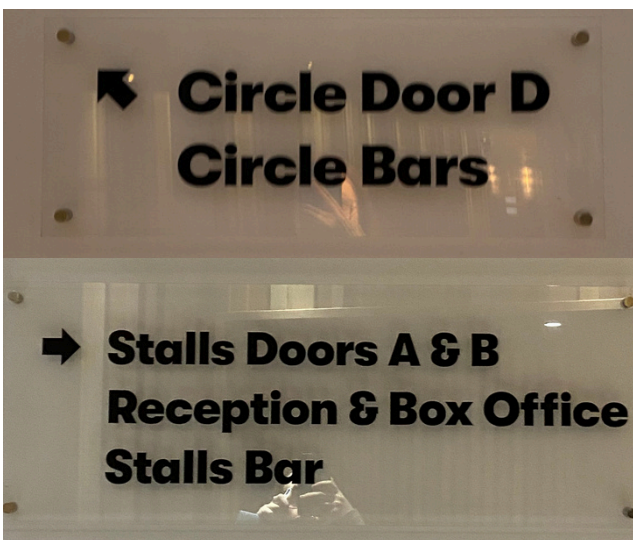
The auditorium will open about 30 minutes before the show starts. You can find your seat at any time during this.

There will be an announcement to tell you when the show is about to start. When you hear this, you should find your seat if you haven't already.



Your ticket will tell you what level of theatre, letter row, and number your seat is.

If you have a physical ticket, it looks like this. You might also have an e-ticket on your phone.



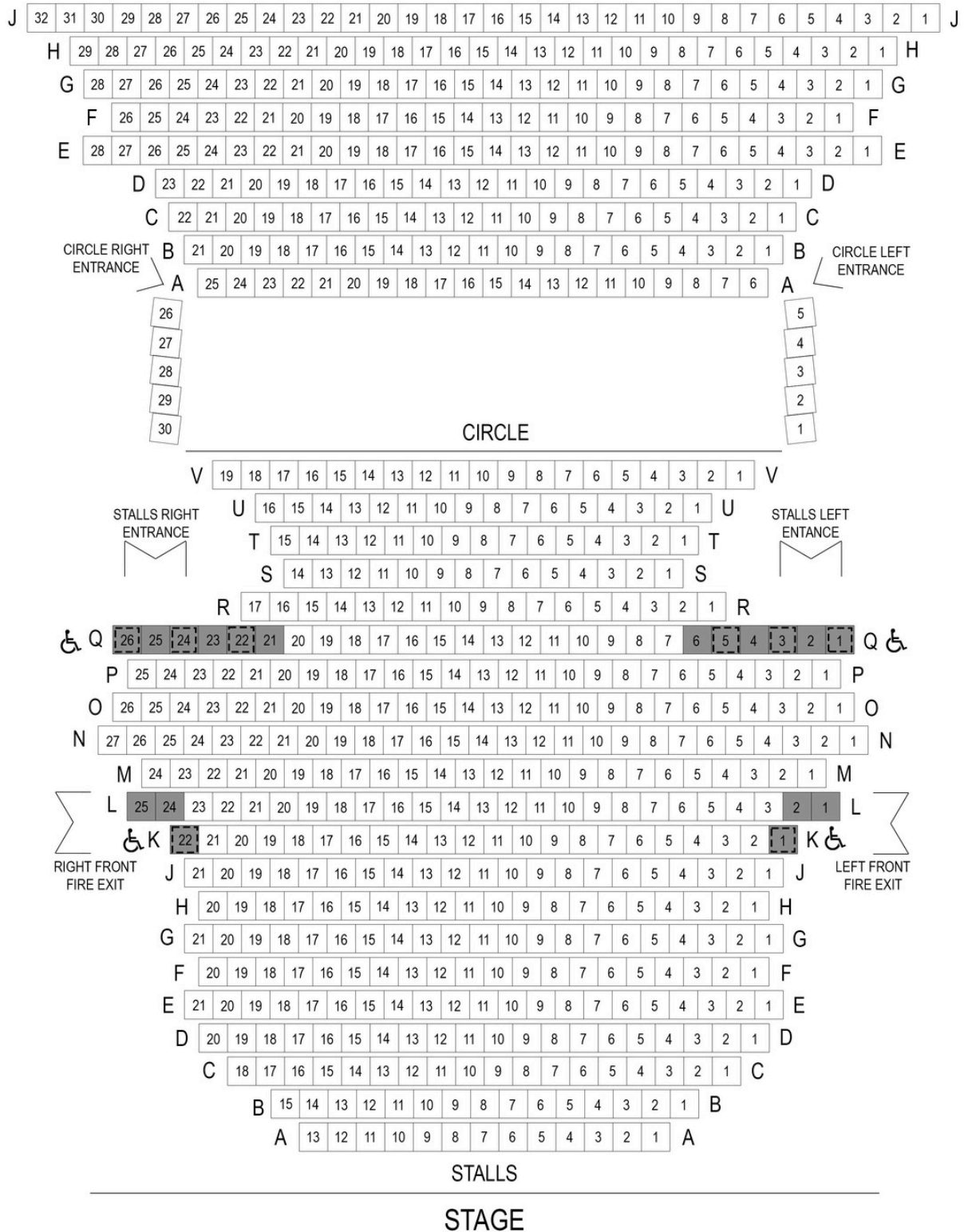
There are two levels in The Arts Theatre Cambridge.

The Stalls are on the ground floor.

The Circle is upstairs on Level 1.

FINDING YOUR SEAT

This is a map of the auditorium, showing you all the row letters and seat numbers in the Stalls and the Circle.

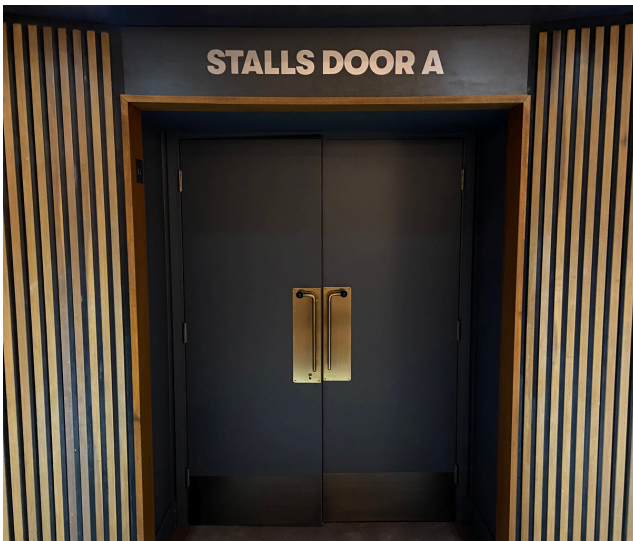


FINDING YOUR SEAT



If you are sat in the Stalls, you will enter through Door A or Door B.

Your ticket will tell you which door you should go in.



Door A looks like this.

Door A is next to the Stalls Bar. When you reach the Stalls Bar from the Peas Hill entrance, turn right to get to Door A.



Door B looks like this.

From the Stalls Bar, turn right and walk past Door A to reach Door B.

From the Cloakroom, walk through the foyer with the lift to reach Door B.

FINDING YOUR SEAT



If you are sat in the Circle, you will enter through Door C or Door D.

Your ticket will tell you which door you should go in.



Door C looks like this.

To get to Door C, go up the stairs by the Stalls Bar and turn right. Door C will be on your left.



Door D looks like this.

To get to Door D, go up the stairs by St Edward's Passage entrance or take the lift to the Circle Bar on Floor 1. Go past the Circle Bar and turn right to reach Door D.

FINDING YOUR SEAT



One of our ushers will check your ticket as you go in. They will help direct you to your seat.



This is what the auditorium looks like inside.

Before the show starts, it might be noisy.



The rows are alphabetical. A is closest to the front, and V is closest to the back.

DURING THE SHOW



When the show is about to start, the lights will dim and everyone will stop talking.

Everyone will turn off their phones. Taking pictures or videos is not allowed.



There might be loud sounds and music during the show. You can cover your ears if its too loud.

Other people in the audience might clap or laugh during the show. You can too, but you don't have to.



If you would like to take a break during the performance, you can go to one of the bars or foyer to relax in quiet.

THE INTERVAL



In some shows, there is a break half way through. This is called an interval. The lights will get brighter and you can leave your seat and talk.



The interval is 20 minutes long. During the interval, you can have a break, go to the toilet, and buy more drinks and snacks if you want.



At the end of the interval there will be an announcement. You will then need to go back to your seat.

When the show is about to continue the lights will dim again and the performers will come back on stage.

THE END OF THE SHOW



At the end of the show, the performers will bow and everyone will clap and cheer to show the performers they enjoyed the show. Some people might stand up.

It will be noisy. You can clap and cheer as well.



Once the performers leave the stage, the lights will get brighter and everyone will start to leave the auditorium.

It might get busy, and there might be queues to leave. You can stay in your seat until it's quieter if you want.



We hope you enjoy your visit to The Arts Theatre Cambridge!

If you have any more questions, please contact our Box Office in one of the following ways:

Email:

boxoffice@artstheatre.co.uk

Phone:

01223 503333

Open 12pm-8pm

Mon - Sat

In person:

6 St Edward's Passage

Cambridge

CB2 3PJ

Open 12pm-8pm

Mon - Sat

You can also direct access-specific enquiries here:

Email:

access@artstheatre.co.uk

Or find out more on our access web page.